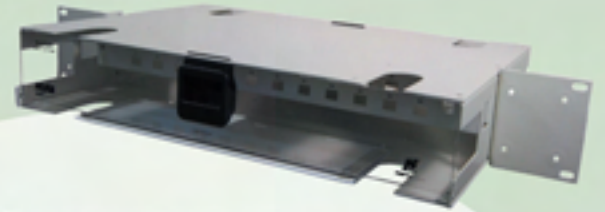
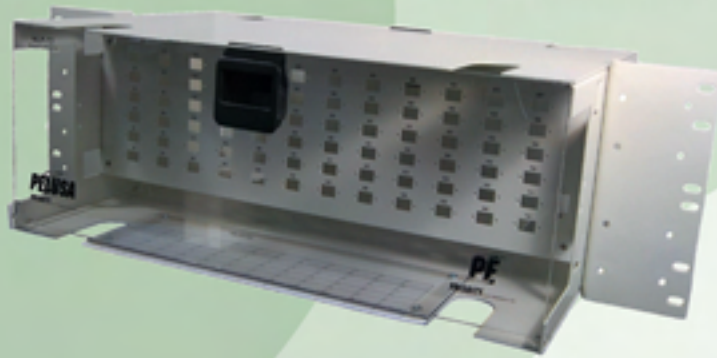


NLP Rackmount Patch Panels (19/23")



Features

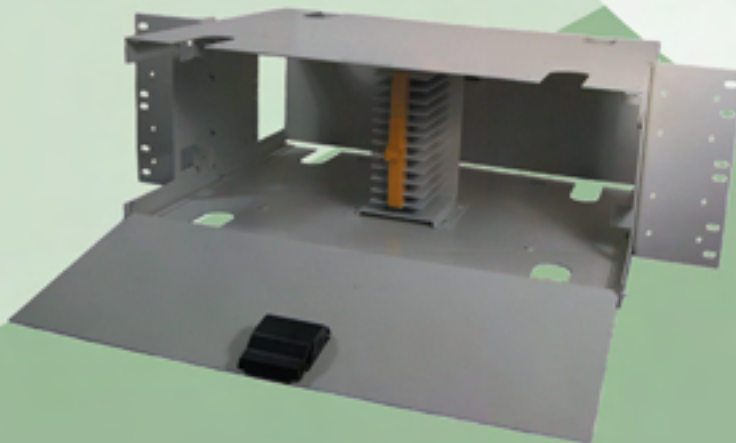
- ✓ Reversible mounting brackets allow installation in 19 or 23" EIA/WECO and ETSI racks.
- ✓ Densities of up to 144 SC ports.
- ✓ Available with the following adapter* styles and densities:
 - SC - up to 144 ports
 - ST, FC - Up to 96 ports
 - LC - Up to 144 ports (72 port NLP with duplex LC Coupler)
- * Adapters available in Multimode and Singlemode
- ✓ Optional cable management available.
- ✓ Available uncabled or in convenient pre cabled multifiber stub options.
- ✓ 2 RU - 24 Port (Dimensions: 12.75" x 17" x 3.5" (32.4cm x 43.2 cm x 8.9cm))
- ✓ 3 RU - 48 Port (Dimensions: 12.75" x 17" x 5.25" (32.4cm x 43.2 cm x 13.3cm))
- ✓ 4 RU - 72 & 96 Port (144 SC)(Dimensions: 12.75" x 17" x 7" (32.4cm x 43.2 cm x 17.8cm))
- ✓ Pull out labeling for access to port assignments without opening panel (also available with IntelliPatch)



144 Port SC ports with long finger management



NLP Rackmount Splice Panels (19/23")



Features

- ✓ Reversible mounting brackets allow installation in 19 or 23" EIA/WECO and ETSI racks.
- ✓ Densities of up to 144 splices (12 12f splice trays).
- ✓ Optional cable management available.
- ✓ Available with splice trays or without.
- ✓ 2 RU - 24 Port (Dimensions: 12.75" x 17" x 3.5" (32.4cm x 43.2 cm x 8.9cm))
- ✓ 3 RU - 48 Port (Dimensions: 12.75" x 17" x 5.25" (32.4cm x 43.2 cm x 13.3cm))
- ✓ 4 RU - 144 Port (Dimensions: 12.75" x 17" x 7" (32.4cm x 43.2 cm x 17.8cm))

