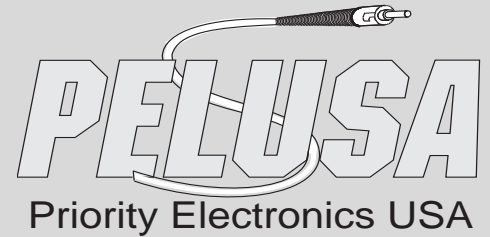
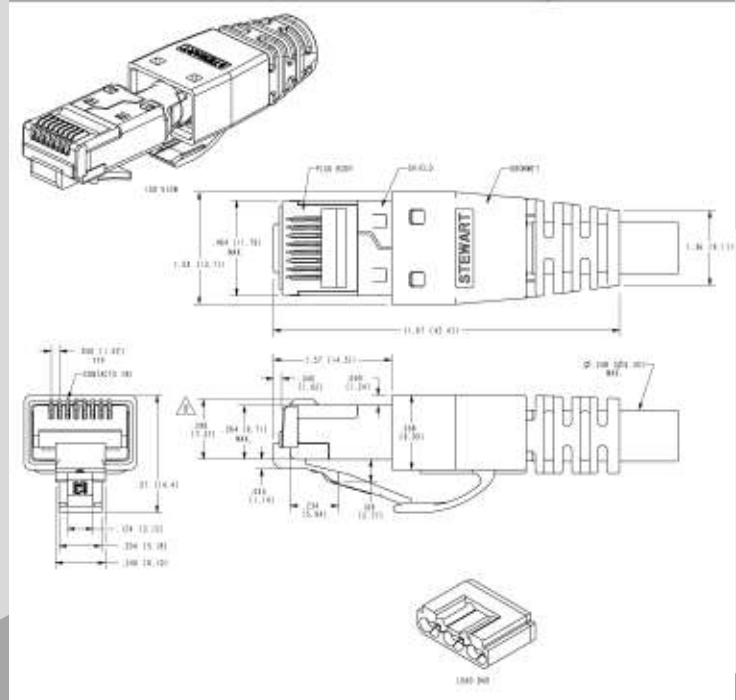




## Category 6 Shielded Modular Assemblies



PRIORITY ELECTRONICS manufactures a complete line of voice and data modular cable assemblies. PRIORITY utilizes the highest quality connectors and all assemblies are tested for continuity before shipping. All shielded assemblies come with an anti-snap boot integral to the connector. All Cat6 assemblies are offered either channel tested or component compliant tested. Category 6 assemblies are available in any desired length.



### A word about Cat 6 Patchcords:

Priority offers two levels of Cat 6 patchcords: 1.) Channel Tested and 2.) Component Compliant Tested.

Channel tested patchcords are combined with a marginal (but passing) permanent link (horizontal cabling and cat 6 jacks). Channel testing is then performed and the patchcord passed or failed depending upon final result. This test result insures Cat 6 performance on most manufacturers Cat 6 Permanent links.

Component Compliant tested patchcords are tested utilizing our Fluke DSP analyser and patchcord adapters. This system fully meets the requirements for component testing as laid out in the TIA/EIA-568-B.2-1 Annex J. and insures the best possible performance over the widest range of different manufacturers permanent links.

1) CONSTRUCTION:

CONDUCTOR:	26 AWG 7/34 STRANDED TINNED COPPER	NOM. DIA.	.019"
INSULATION:	POLYOLEFIN, .009" NOM. WALL THICKNESS		.036"
PAIRS:	COLOR CODED SINGLES TWISTED INTO PAIRS		.072"
CABLE:	(4) TWISTED PAIRS TWISTED TOGETHER WITH A CENTRAL SPLINE AND WRAPPED WITH A CLEAR POLYESTER BINDER TO FORM A CABLE CORE.		.205"
SHIELD:	AN ALUMINIZED POLYESTER FOIL SHIELD (FOIL IN) WITH A 26 AWG TINNED COPPER DRAIN WIRE IN CONTACT WITH METALIZED SURFACE (100% COVERAGE) SHALL BE APPLIED OVER THE CABLE CORE.		.208"
JACKET:	POLYVINYLCHLORIDE, BLACK, .024" NOM. WALL THICKNESS		.235" NOM.
	OVERALL CABLE DIAMETER		.240" MAX.
			(BY PI TAPE)

2) PHYSICAL PROPERTIES:

TEMPERATURE RATING,	MAX. 75°C
TEMPERATURE RATING,	MIN. -20°C
WT./M', NOM., NET.	25.0 LBS.

3) ELECTRICAL CHARACTERISTICS: (FOR 100m OF CABLE)

CAPACITANCE, MUTUAL	13.5 PF/FT. AT 1 MHZ
DIELECTRIC WITHSTANDING, MIN	1500V RMS
VOLTAGE RATING, MAX.	300V
D. C. RESISTANCE, MAX.	14.0 Ω
IMPEDANCE, NOM.	100 ± 15 Ω 1-250 MHZ
IMPEDANCE, SMOOTHED	100 ± 10 Ω TYPICAL 5 - 250 MHZ
SRL	23 DB 1-20 MHZ
RETURN LOSS	23 - 10 LOG(F/20) 20-250 MHZ
	1 - 10MHZ 20 + 5 LOG (F) DB MIN
	10 - 20MHZ 25 DB MIN
	20 - 250MHZ 25- 8.6 LOG(F/20) DB MIN
PS NEXT	1-250MHZ 42.3 - 15 LOG (F/100) MIN
NEXT	1-250MHZ 44.3 - 15 LOG (F/100) MIN
PS ELFEXT	1-250MHZ 24.8 - 20 LOG(F/100) MIN
ELFEXT	1-250MHZ 27.8 - 20 LOG(F/100) MIN
ATTENUATION	1-250MHZ 1.5[1.808 SQRT(F)+.017(F)+.2/SQRT(F)]MAX
DELAY	1-250MHZ 534 + 36/SQRT(F)
DELAY SKEW	1-250MHZ <25NS
VELOCITY OF PROPAGATION	68%
NOTE: ALL TESTING IS CONDUCTED OFF THE REEL.	

4) AGENCY APPROVALS:

- NEC (UL) TYPE CM
- CEC C(UL) TYPE CMG

5) APPLICATION:

SHIELDED FLEXIBLE PATCH/JUMPER CABLE TO SUPPORT SCREENED 568-B.2.1 CATEGORY 6 APPLICATIONS.  
RoHS COMPLIANT MATERIALS.

6) PRINT: (WHITE INK)

QUABBIN DATAMAX 6 F/UTP 100 OHM PATCH CORD P/N 2930R — TYPE CM (UL) C(UL) CMG 4 PR 26AWG 75C — RoHS —  
(LOT DESIGNATOR) (SEQUENTIAL FOOTAGE)

7) COLOR CODE:

1. BLUE X WHITE/BLUE
2. ORANGE X WHITE/ORANGE
3. GREEN X WHITE/GREEN
4. BROWN X WHITE/BROWN

8) PACKAGING:

TO BE PACKAGED AS PER QWC'S  
STANDARD PACKAGING

