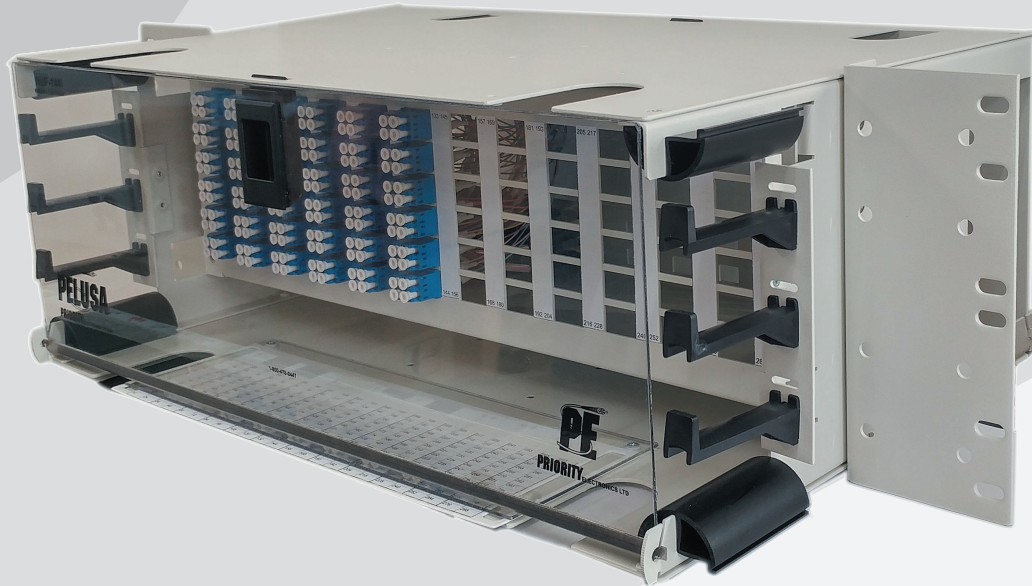
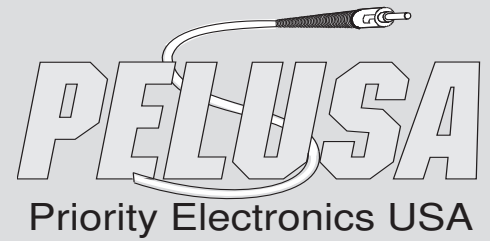


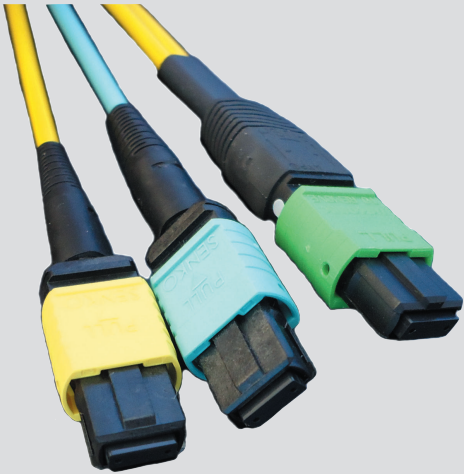


288P LC-MPO NLP 4 RU Panel



- ✓ 288 LC connectors broken out to 24 - 12F MPO connectors on the back
- ✓ 19/23 inch rack mount options
- ✓ 4RU – 12.75" x 17" x 7" (32.4cm x 43.2cm x 17.8cm)
- ✓ Cable management front and back

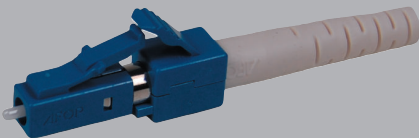




MPO Specification

- ✓ All Materials are compliant to RoHS, REACH SVHC and UL94 V-0
- ✓ Interface Dimensions Compliant to IEC 61754-7 (Type MPO Connector Family)
- ✓ Meets or exceeds Telcordia GR-1435
- ✓ All MT ferrules scrutinized with an Interferometer and completely tested for IL & RL

MPO IL & RL	SM Standard	SM Low Loss	MM Standard
IL Typical	0.25dB	0.10dB	0.20dB
IL Max	0.75dB	0.35dB	0.60dB
RL	>60dB	>60dB	>20dB



LC Specification

- ✓ All Materials are compliant to RoHS, REACH SVHC and UL94 V-0
- ✓ Meets or exceeds Telcordia GR-326 Issue 3
- ✓ Meets Priority Performance Specification
- ✓ IL Max .25dB, RL >55dB